



MONTHLY MEMBERSHIP PROGRESS REPORT

District 5 NE

Results as of: 5/31/2016

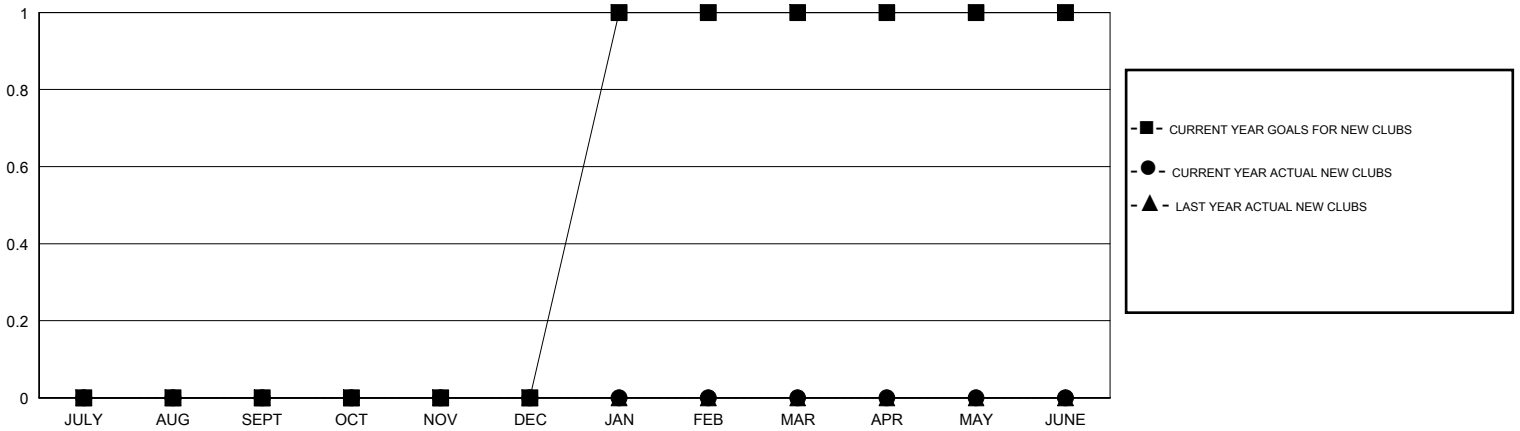
GMT: Judy Hankom

LOCATION NORTH DAKOTA

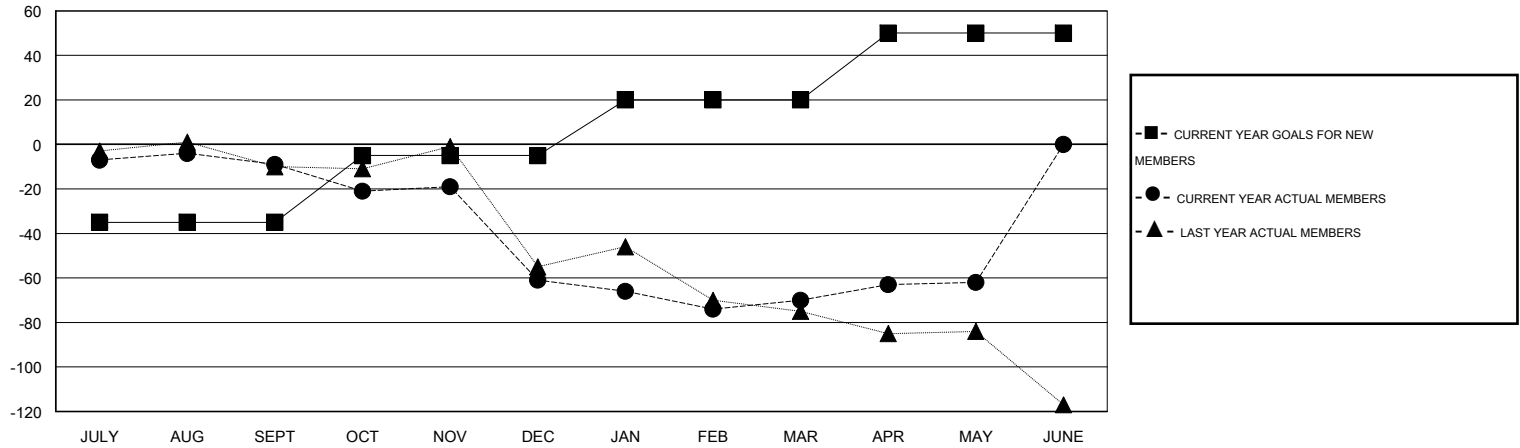
GMT CA 1

Clubs					Members				
RESULTS FOR 2015-2016					RESULTS FOR 2015-2016				
QUARTER	NEW CLUB GOAL	NEW CLUBS	DROPPED CLUBS	NET GAIN/LOSS	QUARTER	NEW MEMBER GOAL	CHARTER AND NEW MEMBERS ADDED	DROPPED MEMBERS	NET GAIN/LOSS
JULY/AUG/SEPT	0	0	0	0	JULY/AUG/SEPT	-35	20	29	-9
OCT/NOV/DEC	0	0	1	-1	OCT/NOV/DEC	30	34	86	-52
JAN/FEB/MAR	1	0	0	0	JAN/FEB/MAR	25	26	35	-9
APR/MAY/JUNE	0	0	0	0	APR/MAY/JUNE	30	19	11	8

GOALS AND ACTUAL NEW CLUBS CUMULATIVE



GOALS AND ACTUAL MEMBERS CUMULATIVE



DROPPED CLUBS: 1	34 CLUBS OF 55 ADDED 1 OR MORE NEW MEMBERS	GENDER DISTRIBUTION MALE 1,006 (75.41%) FEMALE 328 (24.59%)
DROPPED MEMBERS DECEASED 16 CLUB CANCELLED 11 OTHER 134 TOTAL 161	CLICK HERE FOR HEALTH ASSESSMENT DATA	FAMILY UNIT MEMBERS 144 HEAD OF HOUSEHOLD 72 NON-HEAD OF HOUSEHOLD 72